

## **EAST AYRSHIRE COUNCIL**

### **SOCIAL WORK COMMITTEE : 8 NOVEMBER 2001**

#### **REVIEW OF DAY SERVICES – ADULTS WITH A LEARNING DISABILITY – STAGE 1**

##### **Report by the Director of Educational and Social Services**

### **1. PURPOSE OF REPORT**

- 1.1 To advise Committee of the findings of East Ayrshire's Review of Day services and to seek agreement regarding the future shape of the service and revised management structure.

### **2. BACKGROUND**

- 2.1 The Social Work Committee of November 2000 noted the contents of the Scottish Executive document "The Same As You?", a review of services for people with learning disabilities.
- 2.2 The Social Work Committee of 13 September 2001, agreed the contents of the Pan Ayrshire and East Ayrshire Partnership in Practice Agreement 2001 – 2004 (PIP). The review recommendations are set within the context of this agreement, which sets out the future strategic direction of service provision and opportunities for people with learning disabilities living in East Ayrshire.
- 2.3 As indicated in previous reports the consequence of both hospital closure and policies which support ordinary living presents pressures and challenges to provide care and support to an increasing number of people with a learning disability living in the community.
- 2.4 The East Ayrshire Review Of Day Services has been completed following a period of extensive consultation involving service users, carers, statutory agencies and independent sector providers.

### **3. CURRENT SITUATION**

- 3.1 East Ayrshire Council inherited from Strathclyde Regional Council a traditional model of buildings-based day care services which delivered adult training opportunities, were untargeted and lacked structure.
- 3.2 Currently Day Care Services are provided in 4 different buildings 2 in Kilmarnock, 1 in Cumnock and 1 in Dalmellington. These centres provide a total of 187 places from Monday to Friday and serve all areas of East Ayrshire. Individuals attend the centres and use local authority transport which requires some people to be on a bus for up to 2 hours, due to the rural nature of parts of East Ayrshire.
- 3.3 Learning Disability Day Services are supplemented by a contracted independent provider which provides flexible, community based support for 64 adults with a learning disability.

#### **4. MAIN FINDINGS OF REVIEW**

4.1 There has been significant improvement in the services provided to individuals with a learning disability since East Ayrshire was formed in 1996, such as:-

- ? The appointment of key health and social work staff who have specialist knowledge and skills in working with people with a learning disability.
- ? The commissioning of the East Ayrshire Advocacy Project
- ? The development of joint approaches to providing services and funding through the Pan Ayrshire Learning Disability Group, and the establishment of the Corporate Learning Disability Group within the Council.

4.2 Even with these important service developments the current service does not fully meet the needs of individuals some of whom need care and some who need support. Consequently the review highlighted that there required to be significant changes to the way that services were delivered within East Ayrshire.

4.3 The main findings of the review were:-

- ? The current building-based services are unable to meet the care and support needs of individuals nor do they consistently promote community involvement for individuals with a learning disability, creating a segregated service.
- ? The current service does not promote independence or choice for individuals who have less complex needs.
- ? Individuals who attend Day Centres currently undertake activities in large groups.
- ? The inherited staffing levels, remits and responsibilities promote an activity based service which does not meet the individual needs of the majority of people with a learning disability and which cannot promote effective inclusion.
- ? Individuals cannot gain the skills or receive the support required to seek meaningful employment opportunities.
- ? Individuals, families and carers have concerns about the lack of structures in place to support them through the transition from a children and family based service to an adult service.

#### **5. FUTURE DEVELOPMENTS**

5.1 The review considered a range of service changes which would address both local and national concerns.

5.2 The buildings based services should be redesigned and targeted at individuals with the most complex needs who clearly require high quality care. Activities could then be tailor made to enable each person to recognise their optimum potential.

5.3 At the same time a high quality service will also be introduced which will be community based and will provide flexible support, advice, and information to individuals with a learning disability to access mainstream resources and promote opportunities to develop formal and informal supports.

- 5.4 Employment and life long learning opportunities will be developed corporately and in partnership with other agencies to ensure those individuals with a learning disability can gain access to a variety of employment and learning opportunities.
- 5.5 Dedicated co-ordinating staff will be identified to build relationships and facilitate personal life plans to support service users and their carers particularly during the transition from children and families services to adult services. This will include liaison with appropriate educational services.
- 5.6 Establish consistent mechanisms for routine involvement of service users/carers in the improvement, monitoring and development of services.

## **6. IMPLICATIONS FOR EAST AYRSHIRE**

- 6.1 To enable the review findings to be implemented there requires to be a change in the way services are currently delivered.
- 6.2 The proposal to redesign services will require an incremental approach in order to work with local people on a partnership basis and to address the scale of change required.
- 6.3 In partnership with local providers, including Hansel Alliance, we will develop new Service Level Agreements which reflect clarity of role and responsibility whilst identifying where the Council will provide or purchase discreet areas of support services.
- 6.4 Appendix 1 details the proposed management structure required to deliver and develop a range of good quality care and support services in East Ayrshire.

## **7. FINANCIAL IMPLICATIONS**

- 7.1 The Council has allocated £194,000.00 change fund monies in line with Scottish Executive recommendations this financial year and this money has been targeted at the improvement and development of day services.
- 7.2 The re-configuration of a new structure can be met within existing financial resources.
- 7.3 Should Social Work Committee agree to the proposed changes outlined within this report a further report will be presented to Committee in February 2002, Stage 2, with a more developed proposal for the future support staff requirements and potential funding sources identified.

## **8. LEGAL / POLICY IMPLICATIONS**

- 8.1 The recommendations of the review are consistent with Mental Health (Scotland) Act 1984, which outlines the duty of the Local Authority to provide suitable training and occupation for persons suffering from "mental handicaps."
- 8.2 The recommendations are consistent with the NHS and Community Care Act 1990, which seeks to shift the balance of care from hospitals to community based services.

8.3 The proposals contained within this report are consistent with the range of community care policies which have previously been outlined to Committee and are consistent with the national policy framework.

## **9. PERSONNEL IMPLICATIONS**

9.1 Subject to Committees agreement to the implementation of the revised management structure, individual interviews can commence to support current managers to identify employment options including matching current skills and expertise to future positions and where necessary redeployment opportunities.

## **10. RECOMMENDATIONS**

10.1 It is recommended that Social Work Committee : -

- i) Agree to the proposed direction and re-design of future care and support services for people with learning disabilities as outlined in the report, \*Review of Day Services for Adults with a Learning Disability, (East Ayrshire).
- ii) Approve the proposed re-configuration of the management structure.
- iii) Agree in principle to the further development of the review recommendations, including the:
  - refocusing of Hansel Community Supports service specification;
  - consistent application of the Council's Charging Policy; and
  - discontinuation of the weekly attendance allowance "payment" (£1 per week) exploring more innovative use of these funds.
- iv) Refer the staffing implications to the Corporate Sub-Committee of the Policy and Resources Committee for consideration.
- v) Otherwise note the content of the report.

**John Mulgrew**  
**Director of Educational and Social Services**  
**04 October 2001**  
**Enc (1)**

### **LIST OF BACKGROUND PAPERS**

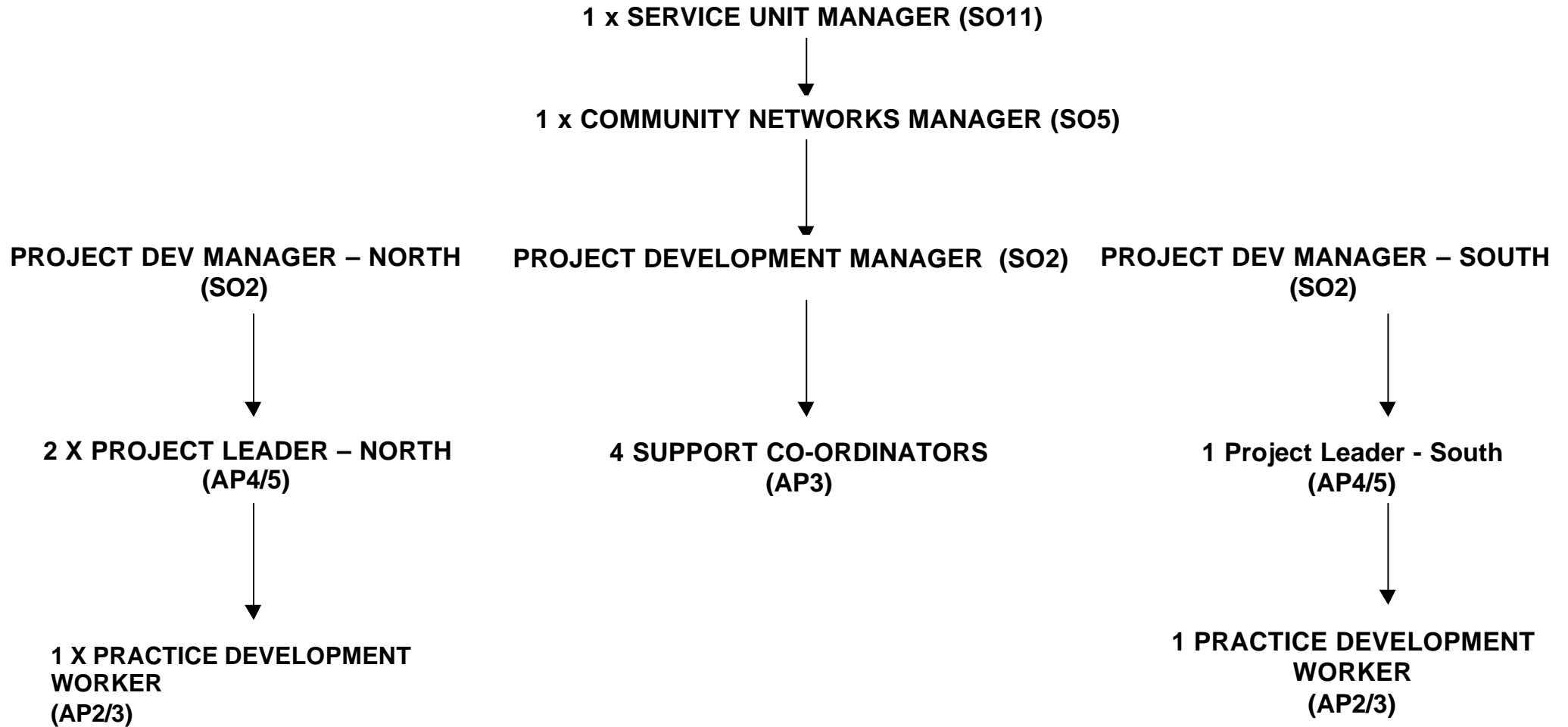
1. The East Ayrshire Review of Day Services – October 2001.
2. "The Same As You?" A Review of Services for People with Learning Disabilities.
3. Making Your Own Choices – East Ayrshire Service User Consultation Document.
4. Draft National Care Standards, Third Tranche – Services for Adults.

\* A copy of report is available in the Members Information Point.

For further information on this report please contact Susan Taylor, Service Unit Manager (Adults), telephone: 01563 576935 or Jackie Donnelly, Principal Officer Community Care, telephone: 01563 576931, Civic Centre, John Dickie Street, Kilmarnock, KA1 1BY.

**IMPLEMENTATION OFFICER: DONNA SINFORIANI**

**COMMUNITY NETWORKS : PROPOSED MANAGEMENT STRUCTURE**



AGENDA